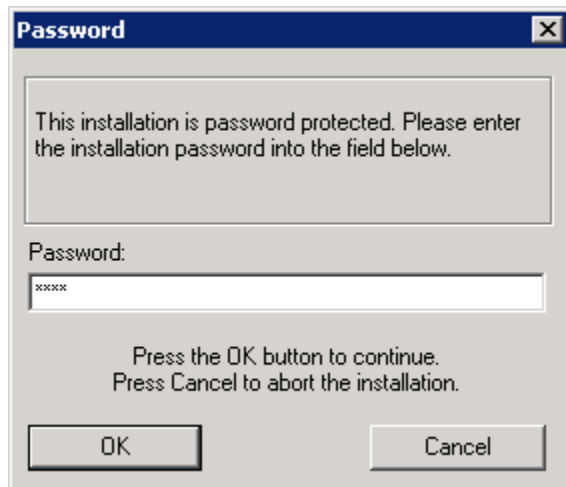


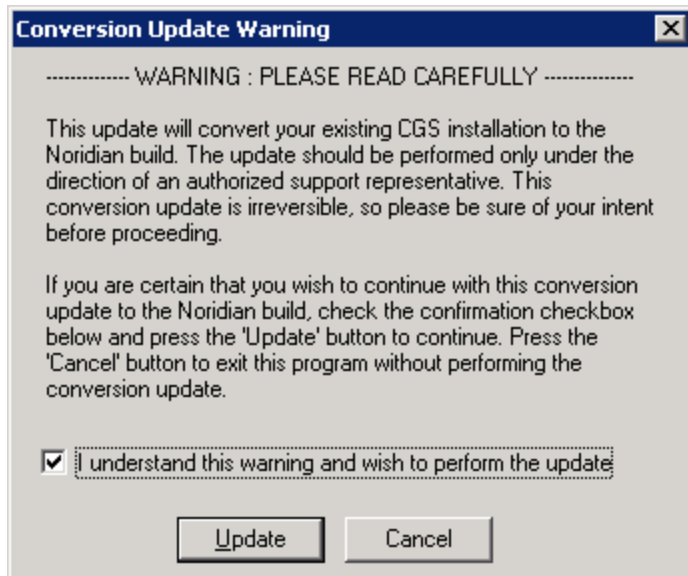
Converting the CGS version of PC-ACE Pro32 to the Noridian Administrative Services (NAS) version of PC-ACE Pro32.

Steps to convert your CGS build of PC-Ace Pro 32 to the NAS build. **Do not complete this process until you are ready to begin testing with NAS. You will not be able to send claims to CGS after this update.**

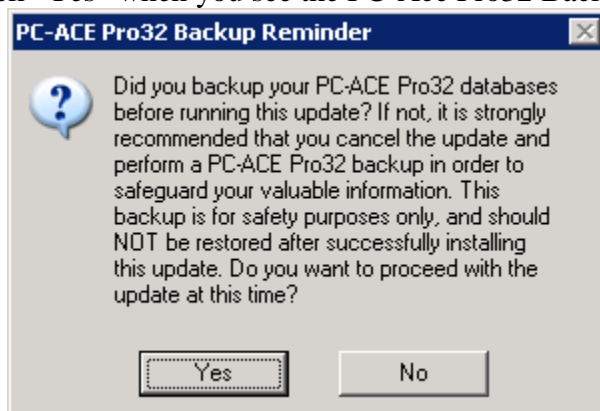
1. Download the update file from the EDISS Idaho Medicare B transition page.
<http://www.edissweb.com/cgp/news/jftransition.html>
2. Run the update. Enter the Installation Password. The password will be provided to you when you accept the Software Licensing Agreement in Total Onboarding, our online registration site.
<https://noridian.totalonboarding.com>



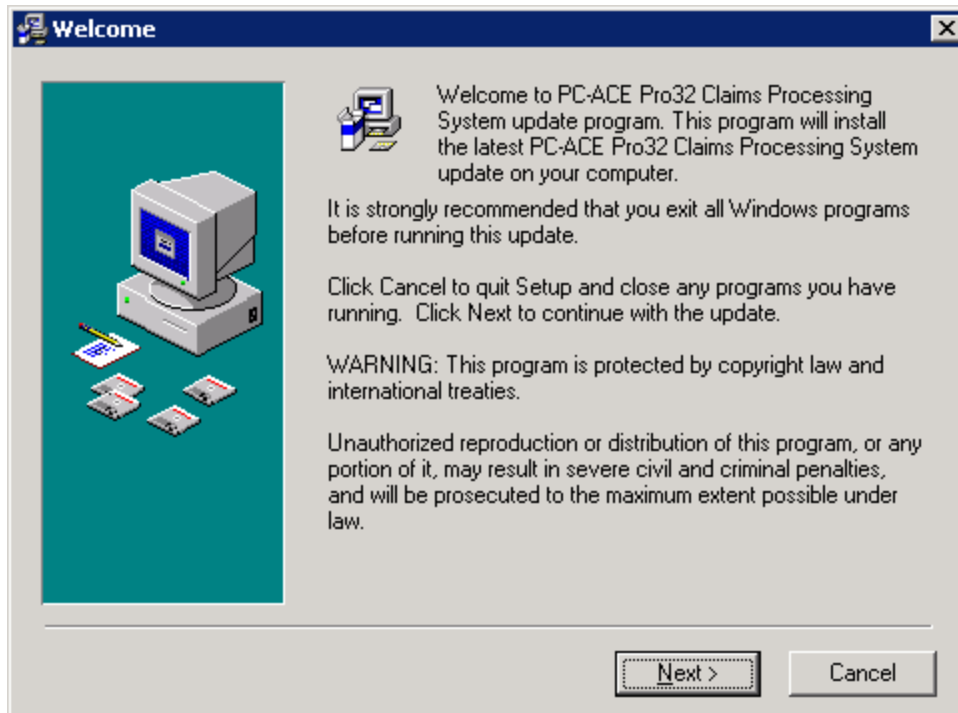
3. You will see the following warning. Check the confirmation checkbox and click on "Update". As stated above, you will not be able to send to CGS after this conversion, so do not proceed unless you are ready to begin sending claims to NAS.



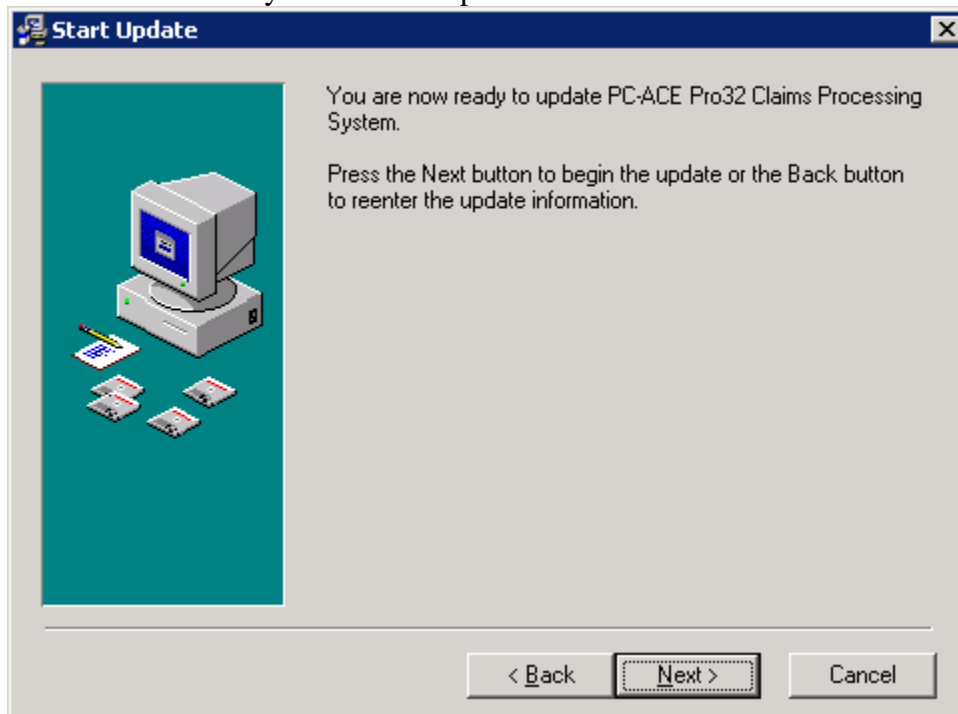
Click “Yes” when you see the PC-Ace Pro32 Backup Reminder.



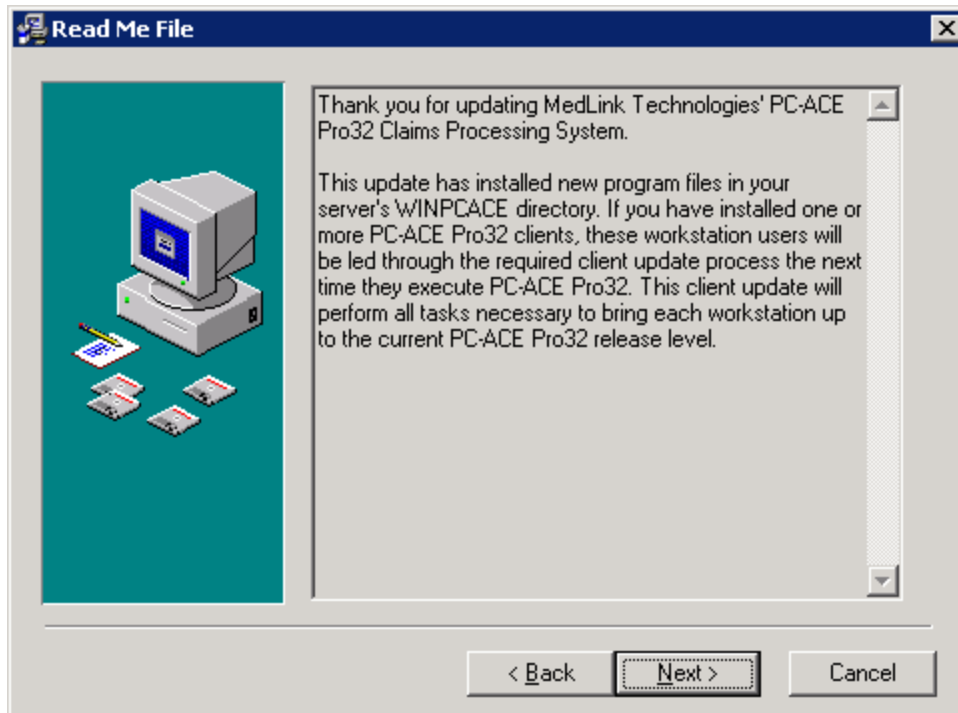
Click “Next” when you see Welcome.



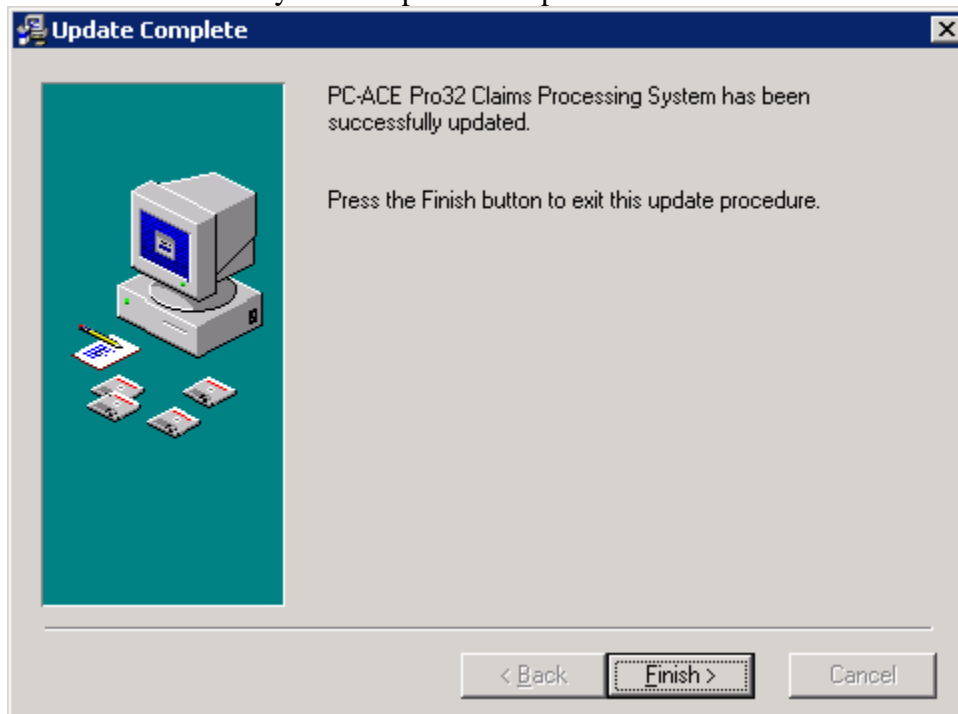
4. Click "Next " when you see Start Update.



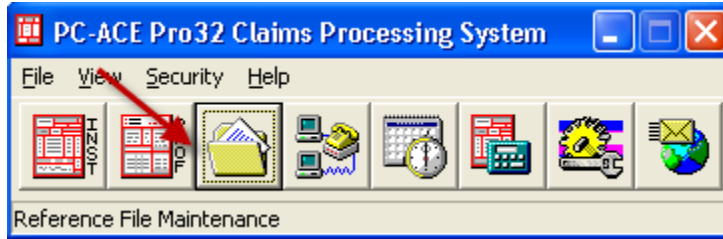
5. Click "Next" when you see Read Me File.



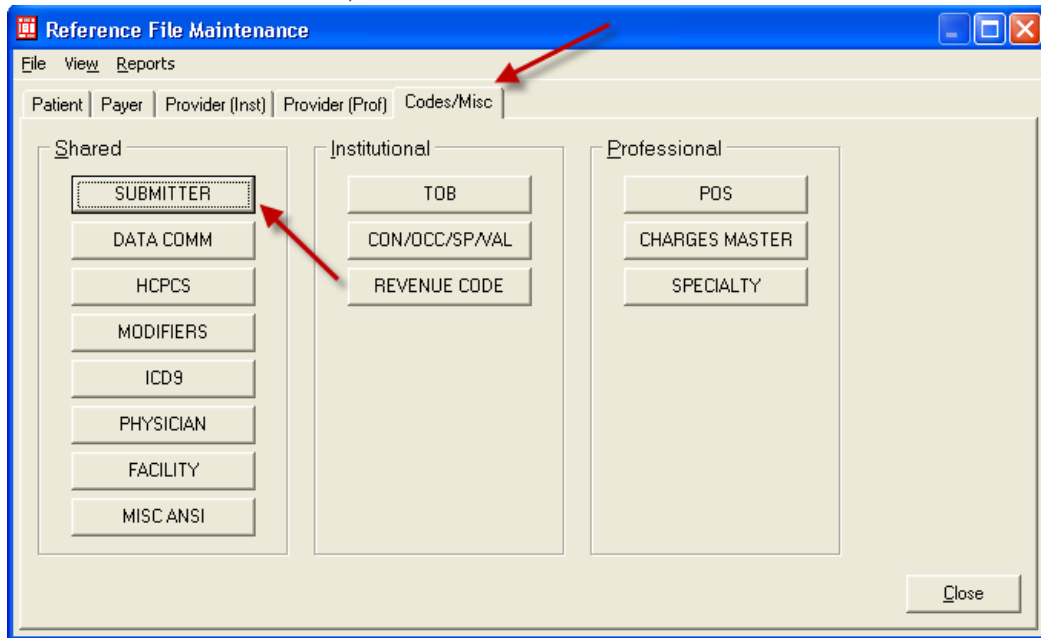
6. Click "Finish" when you see Update Completed.



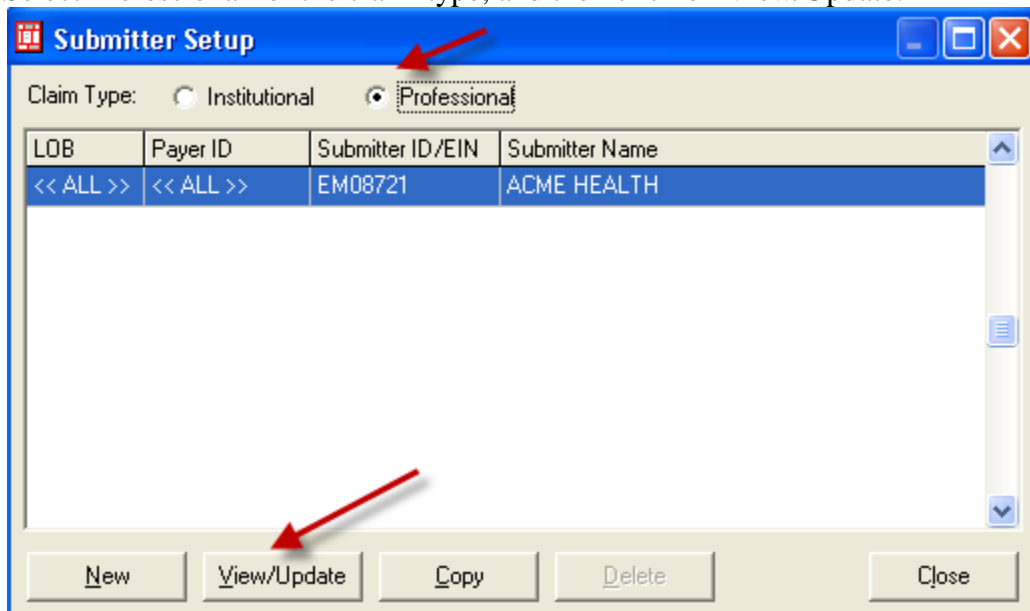
7. Start PC-Ace and click on Reference File Maintenance.



Select the Codes/Misc Tab, and then click on Submitter.



Select Professional for the claim type, and then click on View/Update.



Enter your Noridian assigned Trading Partner ID in the ID field. Complete the rest of the fields with your specific information.

Select ANSI Info (2). You may need to enter a value in this field.

- If you are submitting 4010 claims to Noridian, enter 0010.
- If you are submitting 5010 claims to Noridian, enter 0067.

8. You are now ready to test with NAS. Testing is done through the Total OnBoarding System. Use this link to access the EDISS Total OnBoarding website. <https://noridian.totalonboarding.com>

For testing purposes use the “Medicare Part B Idaho Noridian” payer.

Payer ID	LOB	Description	State	Usage
008310047	MCB	MEDICARE PART B ALASKA	ND	Prof Only
031020048	MCB	MEDICARE PART B ARIZONA	ND	Prof Only
05130	MCB	MEDICARE PART B IDAHO CGS	ND	Prof Only
022020067	MCB	MEDICARE PART B IDAHO NORIDIAN	ND	Prof Only
032020037	MCB	MEDICARE PART B MONTANA	ND	Prof Only
033020046	MCB	MEDICARE PART B NORTH DAKOTA	ND	Prof Only
008350042	MCB	MEDICARE PART B OREGON	ND	Prof Only
034020039	MCB	MEDICARE PART B SOUTH DAKOTA	ND	Prof Only
035020032	MCB	MEDICARE PART B UTAH	ND	Prof Only

Sort By: Payer ID Payer Description Payer LOB Payer State

List Filter Options

Show all payers (no filter applied)

Filter list to include Payer IDs starting with

Filter list to include Payer Names starting with

New View/Update Copy Delete Select Cancel

Once production approval is granted you will receive your NAS production login and password along with connectivity information. For claims transmitted before 2/1/2012 use the “Medicare Part B Idaho CGS” payer. After 2/1/2012 use the “Medicare Part B Idaho Noridian” payer.