

# EDI Support Services

## *Configuration of HyperTerminal*

Before starting HyperTerminal configuration, verify HyperTerminal is loaded on your personal computer.

**Note:** HyperTerminal is a Windows-based communication software package; therefore EDI Support Services (EDISS) does not support the software.

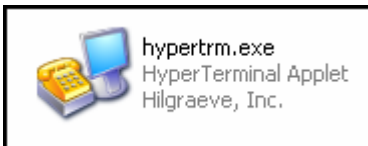
### *HyperTerminal Setup*

1. Locate HyperTerminal in your computer files.

**Note:** HyperTerminal is usually found on the primary hard drive under the Accessories portion of Program Files. Different versions of Windows may have HyperTerminal located elsewhere on the hard drive.

- Windows 95 and Windows 98 is located at:  
C:\Program Files\Accessories\HyperTerminal
- Windows NT and Windows 2000 is located  
at: C:\Program Files\WindowsNT

2. Select the Hypertrm.exe file.



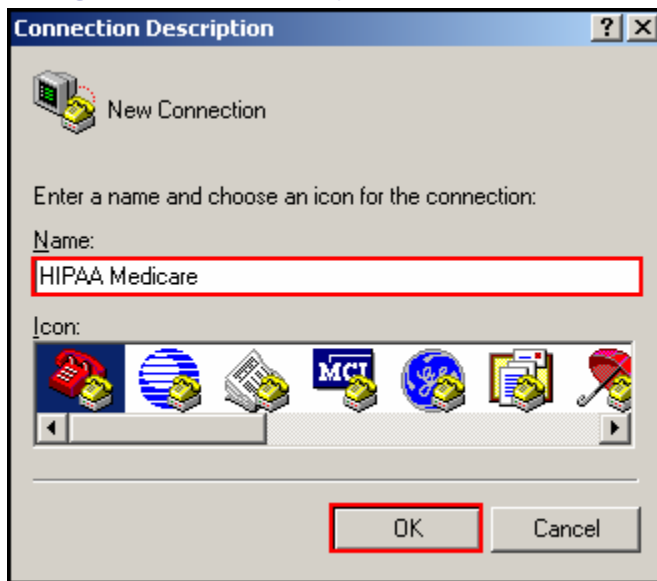
The Connection Description box appears.

3. Type HIPAA Medicare in the Name field and click OK.

#### **In this document:**

- [Learn how to setup HyperTerminal](#)
- [Learn how to link HyperTerminal to PC-ACE Pro32](#)

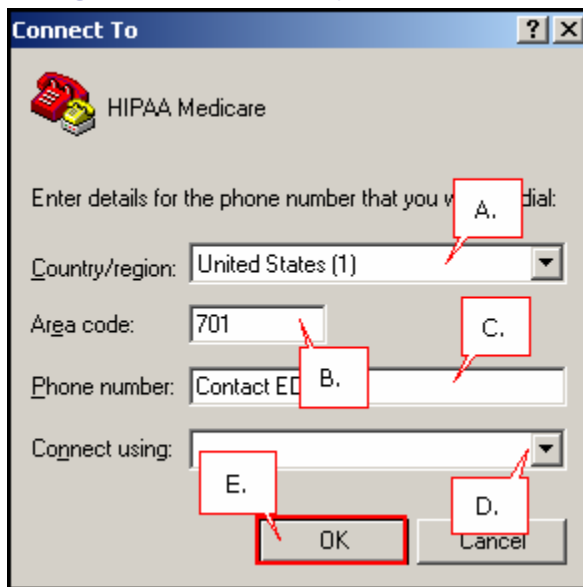
## Configuration of HyperTerminal



The Connect To dialog box appears.

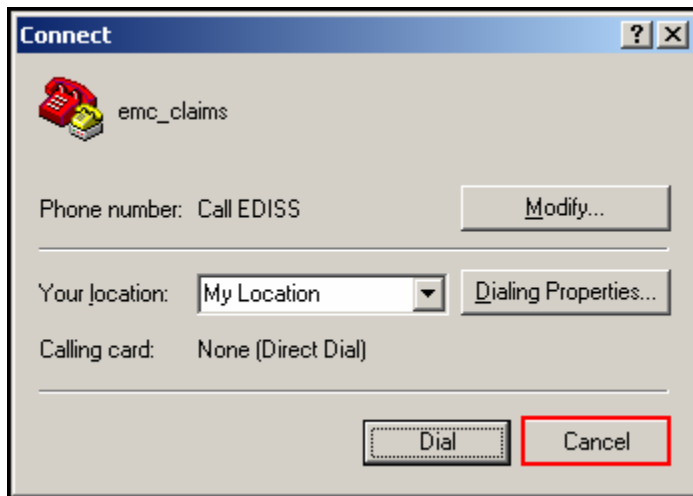
4. Enter the appropriate information into the Connect To dialog box.
    - A. Country/region: Enter United States of America (1).
    - B. Area code: Enter 701 (for North Dakota).
    - C. Phone number: If you have not received a Test or Production notification fax, contact EDI Support Services to obtain the appropriate telephone number for Test or Production.
    - D. Connect using: Select the type of modem that will be used to connect to EDISS.
- Note:** The modem used to connect to EDISS must be a phone modem. Cable modems and Digital Subscriber Line (DSL) modems are not compatible with the EDISS front-end collection environment. Also, long distance service is required for this connectivity option.
- E. Verify the information is correct and click OK.

## Configuration of HyperTerminal



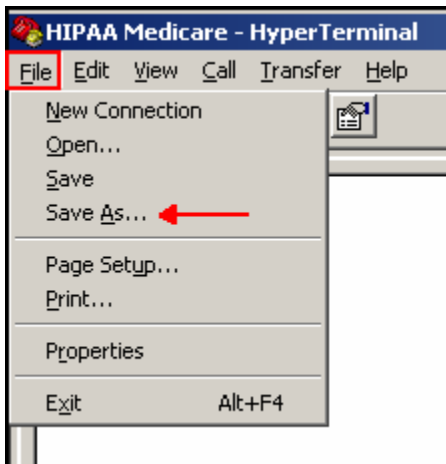
The Connect dialog box appears.

5. Click the Cancel button on the Connect dialog box to view a blank HyperTerminal window.

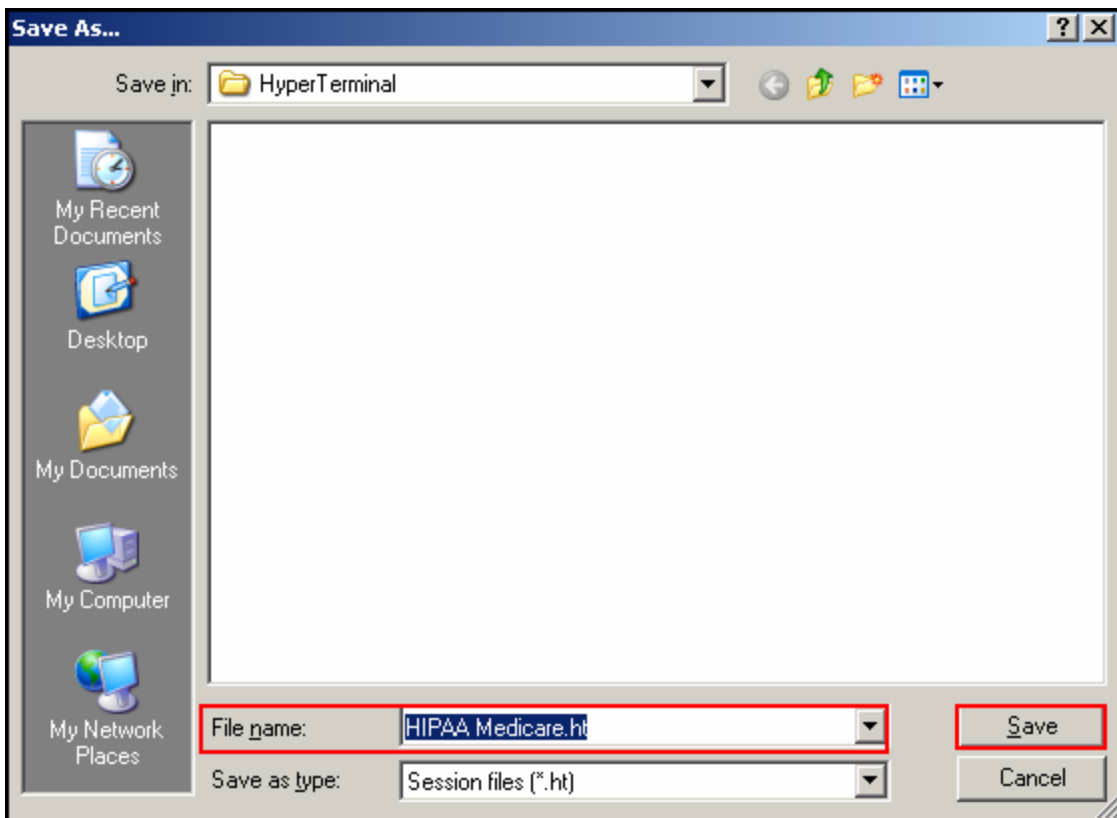


6. From the main toolbar of the HyperTerminal window, select File, and Save As.

## Configuration of HyperTerminal



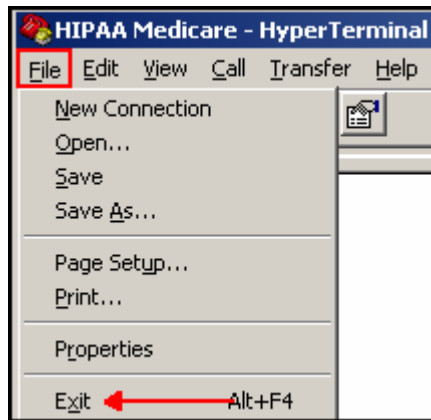
7. Verify the filename is HIPAA Medicare.ht and then select Save.



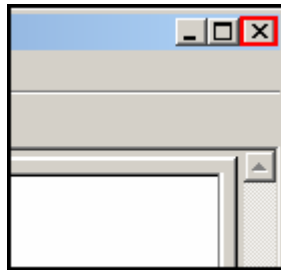
8. Exit the HyperTerminal program using one of the following methods.

- From the main menu, select File and Exit.

## Configuration of HyperTerminal

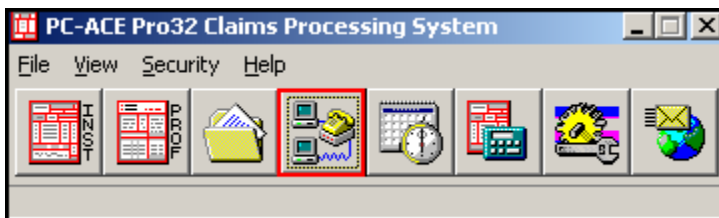


- Click on the X in the upper right hand corner of the program.



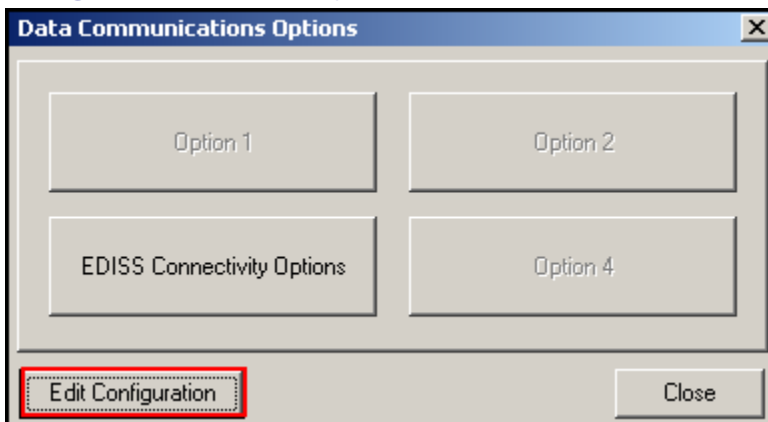
## Linking HIPAA Medicare.ht with PC-ACE Pro32

1. From the main PC-ACE Pro32 toolbar, click on the Data Communications Functions button.

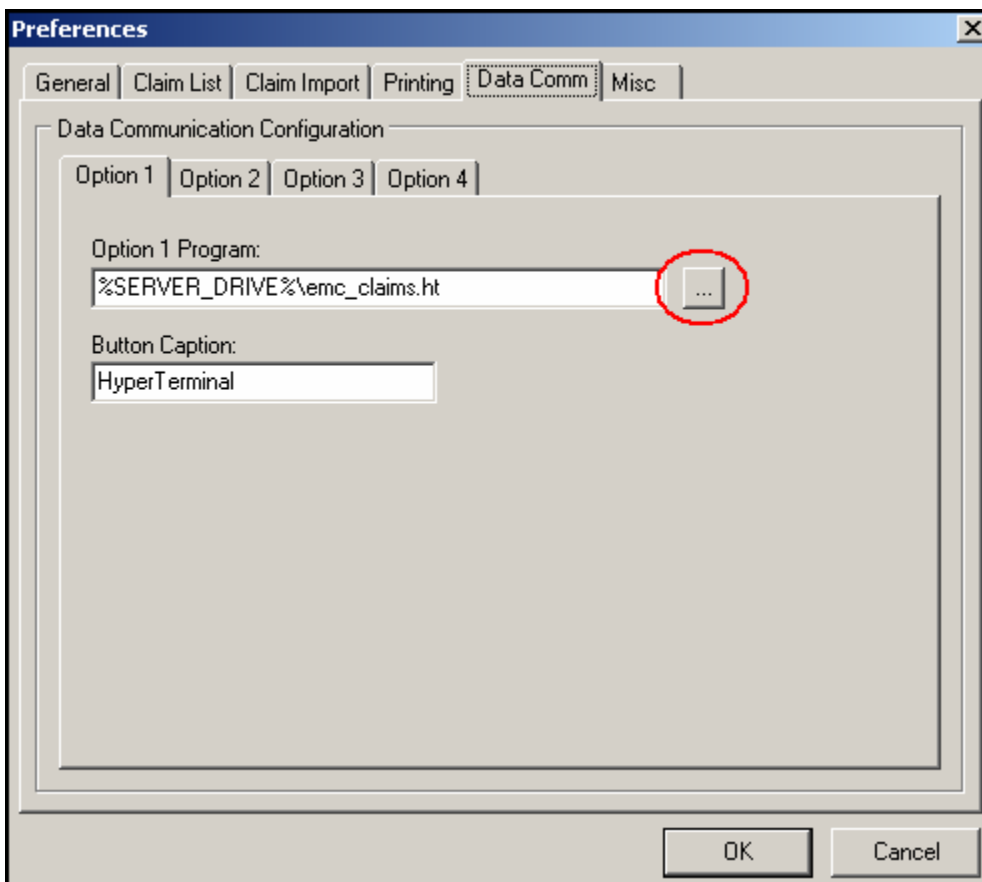


2. Click on the Edit Configuration button.

## Configuration of HyperTerminal



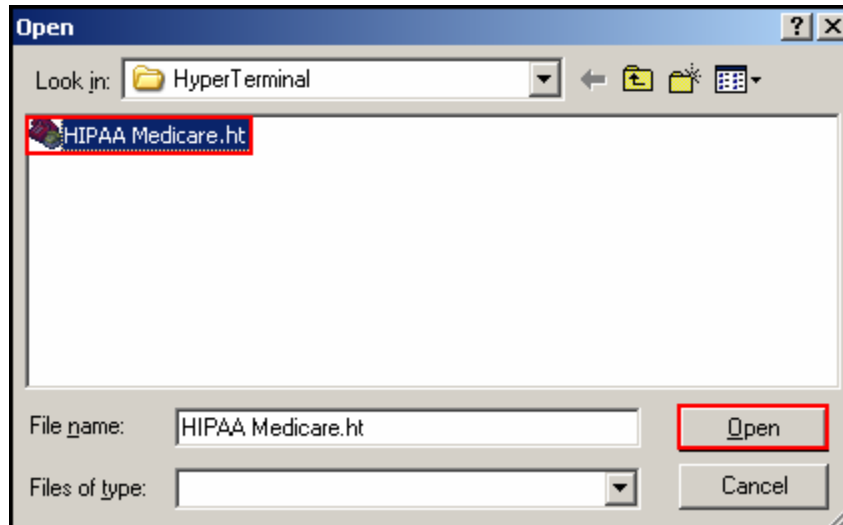
3. From the Preferences dialog box, select the button to the right of the Option 1 Program field.



4. Locate the HIPAA Medicare.ht file that was created and select Open. The location of this file varies:
  - Windows 95 and Windows 98 is located at: C:\Program Files\Accessories\HyperTerminal

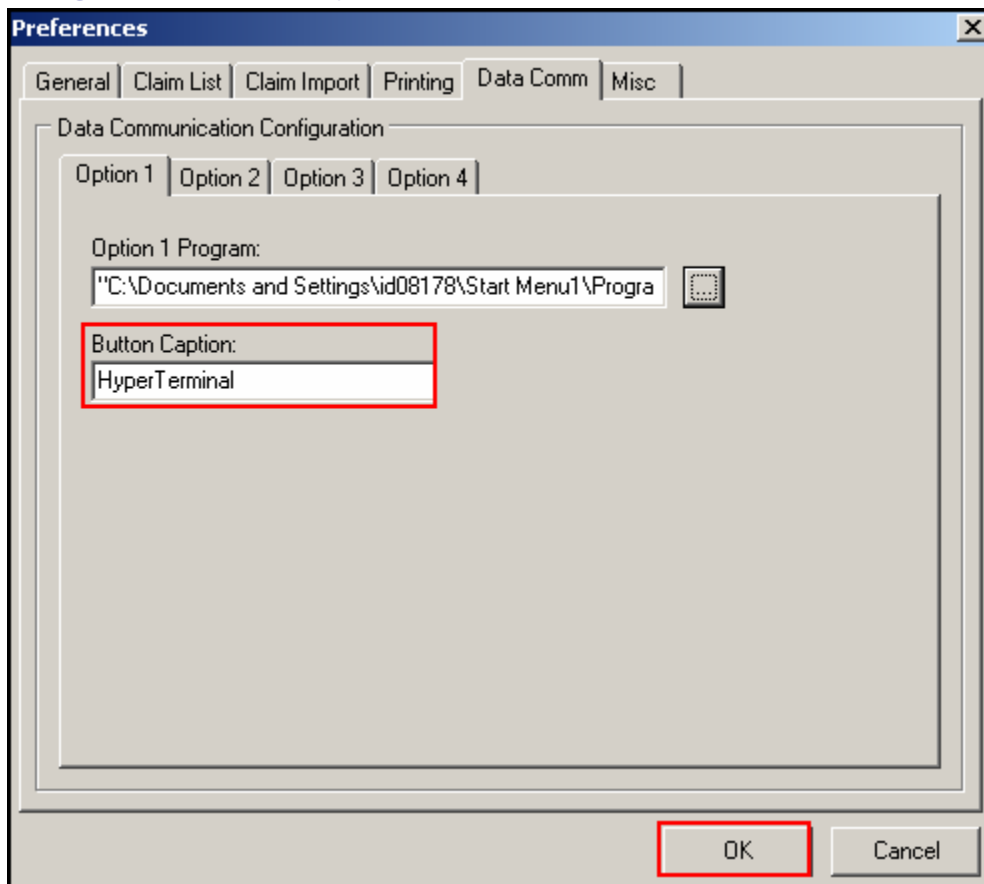
## Configuration of HyperTerminal

- Windows NT and Windows 2000 is located at: C:\Program Files\WindowsNT



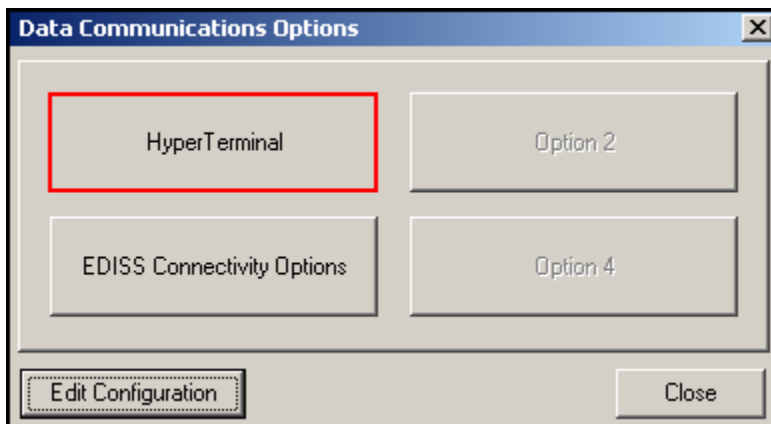
5. Enter HyperTerminal in the Button Caption field of the Preferences menu, if it is not already present and click OK.

## Configuration of HyperTerminal



The HIPAA Medicare.ht HyperTerminal session is now designated to run when Option 1 is selected from the Data Communications Options.

**Note:** This configuration will only need to be redone if your computer system changes.



**Note:** For further information for the use of HyperTerminal, refer to the HyperTerminal Usage document.