

EDI Support Services

User Documentation: PC Print Quick Start Guide for Remittance Advice

Download and install the PC Print software

1. Download and install PC Print from the EDISS website.
2. Select and run the PCPRINTsetup.exe file.
3. Download the remittance advice from EDISS' Bulletin Board System. See [EDISS User Documentation Bulletin Board System \(BBS\)](#), found in the Training and help section of the EDISS website.

In this document:

- Download and Install PC Print software.
- Import and Translate remittance advice using PC Print

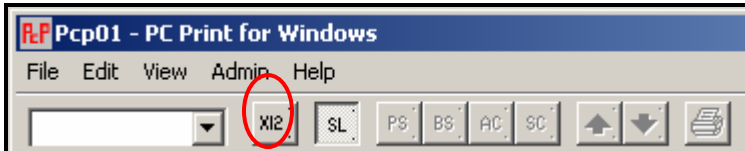
Note: Save the remit in the Data folder for easy reference. The path is C:\Program Files\PC Print\Data.

Import and Translate Electronic Remittance Advice using PC Print

1. Select the PC Print icon from the desktop to open the PC-Print software.

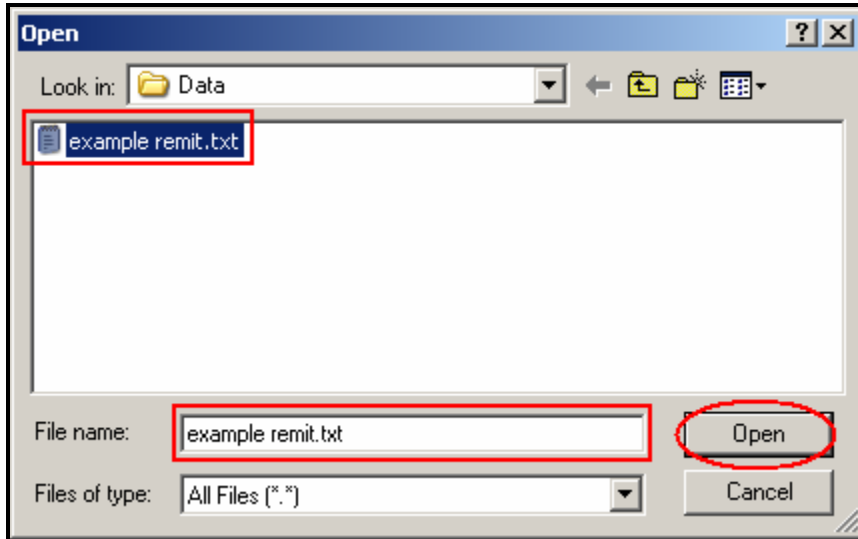


2. Select X12 to display the Open dialog box.

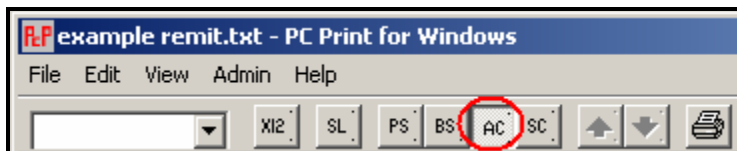


3. Select the Electronic Remittance Advice (ERA) from the list of remits pasted into the Data folder and select Open.

PC Print Quick Start Guide for Remittance Advice Continued...



- The All Claims (AC) button provides access to the All Claims display. This is the display that most resembles the Standard Paper Remittance (SPR) Medicare generates and mails to providers.



- The remit displays.

PATIENT NAME	PATIENT CNTRL NUMBER	FRM DT	COST	REPTD CHGS	DRG NBR	OUTLIER AMT
ICN NUMBER	HIC NUMBER	THR DT	COVDV	NCVD/DENIED	DRG AMOUNT	DEDUCTIBLES
CLAIM # CLM STATUS	MEDICAL REC NUMBER	PAT ST	NCVDV	CLAIM ADJS	DRG O-C	COINS AMT
NAME CHG=xx	HIC CHG=x TOB=xxx	CV LN	NCV L	COVD CHGS	NEW TECH	MSP LIAB MET
NATIONAL PROVIDER ID						
LASTNAME	F R PCN		0	50.00		0.0
PAYERCCN	000000000X		0	0.00	0.00	0.0
1 19	11		0	0.00	0.00	7.4
NAME CHG=74	HIC CHG=HN TOB=	0	0	0.00	0.00	0.0
0000000000						