

Configuration of Procomm Plus

For Connection to EDISS

Purpose: This document defines the process of configuring Procomm Plus and PC-ACE Pro32 for file transmission to EDISS. Procomm Plus is a data communications software package that may be used to transmit the prepared claim to EDISS.

Note: Users must have Procomm Plus 4.8 or higher installed on their PC to utilize the scripts provided by EDI Support Services (EDISS).

A. Configure the Procomm Plus software

1. Locate and copy the necessary Procomm Plus scripts to your PC's Procomm Plus/Aspect folder (X:/Program Files/Symantec/Procomm Plus/Aspect where "X" is your local drive). (**Note:** Only copy the files pertaining to the type of business you conduct.)
 - For Institutional (Part A) business only:
 - o m2(a).was
 - o m2(a).wax
 - For Professional (Part B) business only:
 - o m2(b).was
 - o m2(b).wax
 - For both Institutional and Professional (Part A & B) business:
 - o m2(a&b).was
 - o m2(a&b).wax

To locate and copy the necessary Procomm script files **from a CD**:

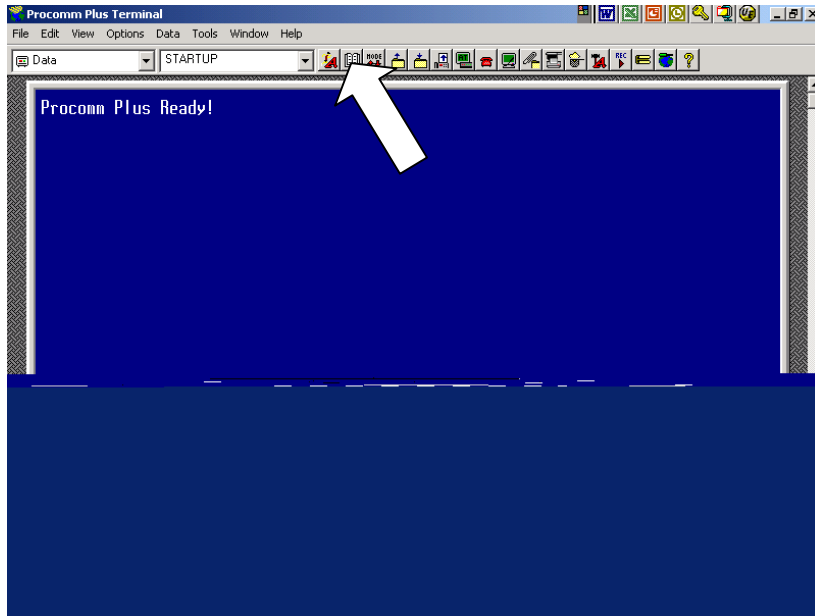
1. insert the CD into the appropriate drive
2. right-click on **Start** from your windows toolbar
3. click **Explore** from the drop-down list
4. select the CD-ROM drive from the Address line drop-down list (i.e. "D:")
5. right-click on the desired file
6. select **Copy** from the drop-down list
7. select the drive containing your "Procomm Plus/Aspect" folder (most likely the C:/ drive)
8. find the "Procomm Plus/Aspect" folder (i.e. C:/Program Files/Symantec/Procomm Plus/Aspect)
9. right-click in the "Aspect" folder
10. select **Paste** from the drop-down list
11. repeat steps 4-9 until both of the desired files have been copied

To locate and copy the necessary Procomm script files **from the internet**:

1. open the web page* containing the Procomm script(s) you wish to copy
2. click on the desired file
3. select **Save this file to disk** from the "File Download" box
4. browse for the Procomm Plus/Aspect folder
5. select the drive containing your "Procomm Plus/Aspect" folder (most likely the C:/ drive)
6. find the "Procomm Plus/Aspect" folder (i.e. C:/Program Files/Symantec/Procomm Plus/Aspect)
7. click on the "Aspect" folder
8. click **Save**
9. repeat steps 1-8 until both of the desired files have been copied

* **Internet location of Procomm scripts:** Go to www.edissweb.com for more information.

2. Open the Procomm Plus software.
 - Either double-click the Procomm Plus icon from your desktop or navigate to the program via the **Start** button, **Programs** options, **Procomm Plus** folder, **Procomm Plus** application.
3. Click on the Connection Directory icon within Procomm Plus.



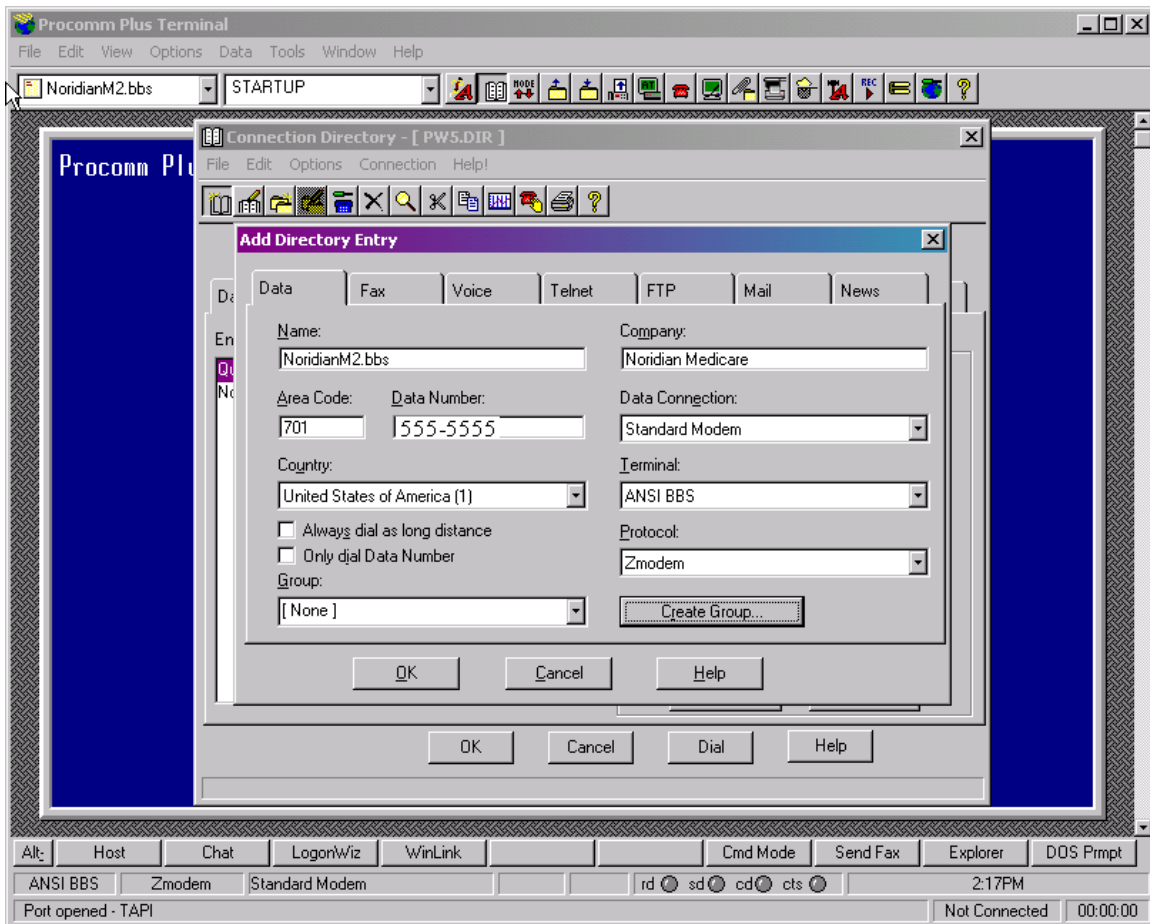
4. Click on the New Entry icon.



5. Insert the following information in the Add Directory Entry window:

- Name: **EDISSM2.bbs**
- Area Code: **701**
- *Data Number: **Testing or Production**
- Country: **United States of America (1)**
- Company: **EDISS**
- Data Connection: **Standard Modem**
- Terminal: **ANSI BBS**
- Protocol: **Zmodem**

***Data Number Note:** If your institution utilizes specific dial-out instructions (i.e. dialing a “9” to access an outside phone line or requiring an authorization code to dial out), you may need to set-up the Data Number field differently. To do so, enter all the digits needed to dial EDISS in the Data Number field, using the comma (“,”) to designate pauses. (For example, entering “9,1701555555,1234” would dial 9, pause, 1701555555, pause, 1234 where “9” may be required to access an outside line and “1234” represents a necessary authorization code.) If you enter these additional digits in the Data Number field, you will also need to check the “Only dial Data Number” checkbox to ensure any other pre-defined dial-up rules enabled within your copy of Procomm Plus are inactivated.



6. Click **OK** in the Add Directory Entry window.
 - You will see the EDISSM2.bbs as an Entry in the Connection Directory.
7. Click **OK** in the Connection Directory window.
8. Close out of Procomm Plus.
 - Click on **File** in the toolbar.
 - Click on **Exit** in the drop down list.

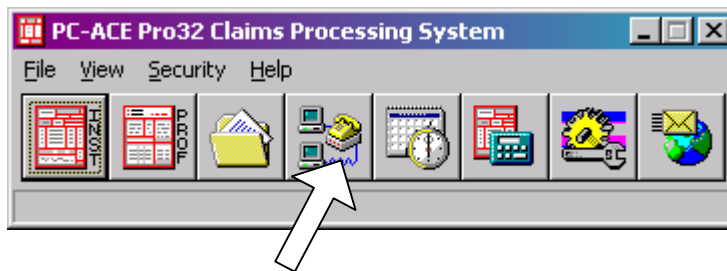
B. Configure PC-ACE Pro32 for use with Procomm Plus

9. Open the PC-ACE Pro32 software, if not already opened.
 - Double click on the PC-ACE Pro32 icon.



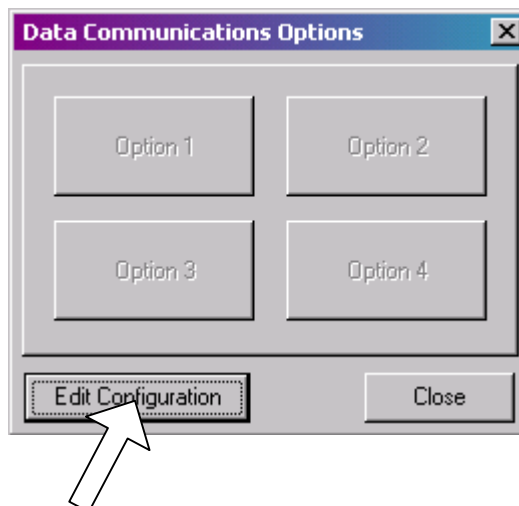
PC-ACE Pro32

10. Open the Data Communications portion of the PC-ACE Pro32 software.
 - Click on the Data Communications icon on the PC-ACE Pro32 toolbar.

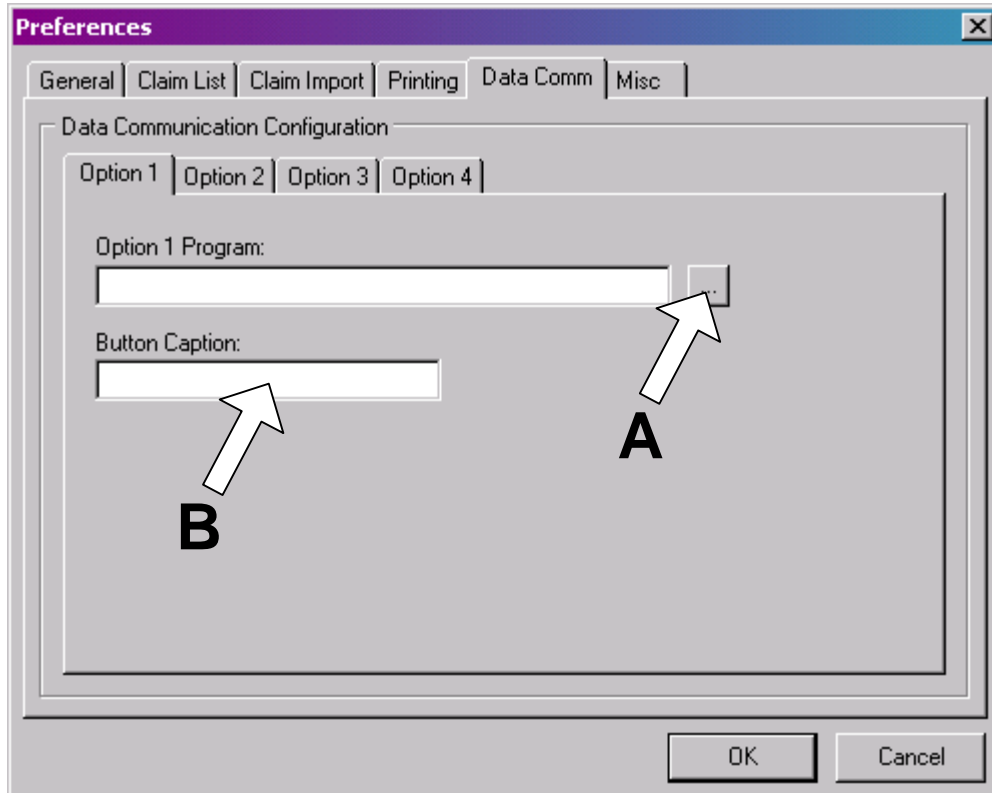


- If the software was not already opened, you may be prompted to enter your sign-on ID and password at this point.

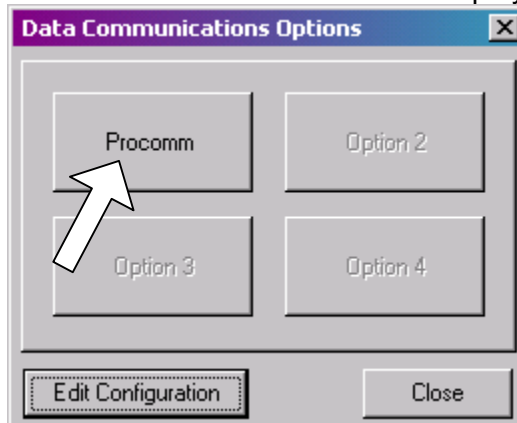
11. Click on the **Edit Configuration** button in the Data Communications Options Window.



- 12.** Under the Option 1, 2, 3 or 4 tab, whichever is available and not yet populated, click on the browse button (letter **A** in figure below) and locate the m2(a).wax, m2(b).wax or m2(a&b).wax file you previously downloaded.
- (Note: You will have only one of these three files depending on your business type. . . refer to step #1 at the beginning of this document.)
 - The file will be under the “C:/Program Files/Symantec/Procomm Plus/Aspect” path and folder or wherever you copied it in step (1).



- 13.** Enter “Procomm” in the “Button Caption” field of the Preferences window (letter **B** in the figure above).
- 14.** Click **OK** in the Preferences window.
- The Data Communications window will now display with a Procomm button.



15. Click **Close** in the Data Communications window.

Congratulations! You have now configured your Procomm Plus and PC-ACE Pro32 software for use in transmitting ANSI 4010 or 4010A1 health care claim files to EDISS.

- (For additional instructions on the use of Procomm Plus to connect to EDISS, please refer to the “Using Procomm Plus for Transmission to EDISS” document.)
- (For additional support with Procomm Plus configurations, please contact Symantec Corporation, the developers of Procomm Plus. Symantec Corporations on-line support address is <http://service.symantec.com/procomm>. EDISS does not provide support beyond these initial configuration and usage documents for the Procomm Plus data communications software.)